

SOP: Monoclonal Antibody Aggregate Testing by HPLC Analysis

Approvals:

Preparer: Dr. Matt Marshall	Date: 20MAR19
Reviewer: Robin Zuck	Date: 08JUN21
Reviewer: Dr. Maggie Bryans	Date: 09JUN21
Reviewer: Hetal Doshi	Date: 10JUN21

1. Purpose:

1.1. To quantify the relative amount of aggregated and monomer molecules in solution of a monoclonal antibody (mAb) drug substance using size exclusion high performance liquid chromatography (HPLC) analysis.

2. **Scope:** Size Exclusion High performance liquid chromatography (HPLC) is an analytical chemistry technique for separating the components of a liquid sample based on molecular size. This SOP uses HPLC to detect the presence of monoclonal antibody aggregates or degradation products in a drug substance sample. HPLC is an FDA required test to adequately characterize the unconjugated mAb reagent of a drug product.

3. Summary of Method:

**Note: If the column is in long-term storage conditions, it requires ~3 hours of run-time to setup as described in 9.2. The system can be prepared for short-term storage conditions in mobile phase the previous day.*

- 3.1. Prepare the mobile phase solution
- 3.2. Power up the HPLC system and equilibrate with mobile phase solution for 60 minutes [if system is in short-term storage] or 120 minutes [if system is in long-term storage].
- 3.3. Prepare AdvanceBio SEC 300Å protein standards
- 3.4. Prepare mAb drug substance for HPLC analysis
- 3.5. Prepare buffer in which mAb drug substance is suspended.
- 3.6. Power up the HPLC system and equilibrate with mobile phase solution
- 3.7. Run an assay for using the prepared AdvanceBio SEC 300Å protein standards and mAb sample
- 3.8. Prepare HPLC system of short-term or long-term storage.
- 3.9. Compute the size of the conjugated and unconjugated mAb sample

4. References:

- 4.1. SOP: Buck Scientific BLC-20P HPLC Operation, document QCB 7, revision 0
- 4.2. SOP: Degassing a Solution by Helium Sparge, document number QCB 6, revision 0
- 4.3. User Guide for Agilent AdvanceBio SEC Columns

5. Definitions:

CV Column Volume; the volume (ml) of the column containing the stationary phase; CV= 2.91 ml for a standard size (4.6 X 150 mm) column

SOP: Monoclonal Antibody Aggregate Testing by HPLC Analysis

<i>Equilibrium</i>	Running the mobile phase solution through the column prior to injecting the sample in order to bring the system into equilibrium
<i>Flow rate</i>	The rate (ml/min) that solution is pumped through the column. The operating flow rate is determined by the assay protocol.
<i>Helium Sparge</i>	Using a stream of helium bubbles to sweep dissolved air out of liquids (helium is virtually insoluble in most HPLC solvent solutions, so very little helium replaces the air)
<i>HPLC</i>	High Performance Liquid Chromatography
<i>Isocratic</i>	The composition of the mobile phase solution is constant; the system has only one pump.
<i>Long-term storage conditions</i>	In long-term storage the system is stored in 20% ethanol for one week or longer.
<i>Mobile phase</i>	The solvent solution used to carry the sample through the column
<i>PeakSimple</i>	Software used to collect and display data
<i>PSI</i>	Pounds per Square Inch
<i>Short-term storage conditions</i>	In short-term storage the system is stored in mobile phase solution for up to a one week
<i>Size exclusion chromatography</i>	Separation based on molecule size. Molecules are separated on the basis of their exclusion from pores in the column packing material.
<i>Stationary phase</i>	The chromatography matrix through which the sample travels.

6. Precautions:

- 6.1. HPLC systems operate at high pressures. Personal injury and equipment damage can result if maximum pressure is exceeded, or the pump runs dry. Monitor pressure readings and solution level whenever the pump is running. If pressure exceeds 2500 psi or if the solution runs out, stop the pump immediately by pressing the RUN/STOP button. Do not set the flow rate higher than 1.5 ml/min with a 250 mm column.
- 6.2. Flow rate consistency is affected by the quality of the solutions. Use HPLC-grade solvents and filter solutions using a sub-micron filter (preferably 0.22 μm). Degas solutions prior to use.
- 6.3. To avoid microbial growth, do not leave the system in a high aqueous solution for a prolonged period. The system should be washed with a storage solution of 20% Ethanol if it is to be idle more than a week.

7. Responsibilities

- 7.1. It is the responsibility of the course instructor/lab assistant to ensure that this SOP is performed as described and to update the procedure when necessary.
- 7.2. It is the responsibility of the students/technician to follow the SOP as described and to inform the instructor about any deviations or problems that may occur while performing the procedure.

SOP: Monoclonal Antibody Aggregate Testing by HPLC Analysis

8. Equipment and Materials:

- 8.1. Buck Scientific BLC-20P HPLC system pre-configured with:
 - 8.1.1. UV-Vis detector
 - 8.1.2. PeakSimple Chromatography Data System
 - 8.1.3. Computer system with PeakSimple software installed
 - 8.1.4. AdvanceBIO 300Å- 4.6mm x 150mm HPLC column. Product # PL1580-3301
- 8.2. HPLC-grade methanol
- 8.3. HPLC-grade water
- 8.4. monosodium phosphate monohydrate
- 8.5. disodium phosphate, heptahydrate
- 8.6. 20% Ethanol
- 8.7. AdvanceBio SEC 300Å protein standards. Product # 5190-9417
- 8.8. Post protein A chromatography monoclonal antibody (mAb) sample to be analyzed
- 8.9. Sample overflow waste beaker
- 8.10. Analytic balance
- 8.11. 500ml graduated cylinder
- 8.12. 500ml volumetric flask
- 8.13. 100ml volumetric flask
- 8.14. 1.5ml Eppendorf Tube
- 8.15. Stirring plate
- 8.16. 2- 500ml laboratory bottles (for mobile phase solution and waste)
- 8.17. 125ml laboratory bottle (for mobile phase to rinse the sample syringe)
- 8.18. Nalgene Rapid-flow filtration unit
- 8.19. 0.22µm syringe filters
- 8.20. 5 ml Luer-Lok syringe
- 8.21. 100uL HPLC sample syringe (Hamilton syringe)
- 8.22. Parafilm
- 8.23. Timer

9. Procedure:

- 9.1. Prepare 500ml of mobile phase solution (150mM Sodium Phosphate, pH 7.0).
 - 9.1.1. In a 800ml beaker, add 3.976g monosodium phosphate, monohydrate and 12.379g disodium phosphate, heptahydrate and 350 ml of MilliQ water or HPLC-grade water.
 - 9.1.2. Add magnetic stirring bar and stir until completely dissolved.
 - 9.1.3. Check the pH.
 - 9.1.4. If required, adjust pH to 7.0±0.1 with 1N phosphoric acid. Bring the volume to 500ml.
 - 9.1.5. Filter the mobile phase solution using a Nalgene Rapid-flow filtration unit into an autoclaved 1L laboratory bottle.
 - 9.1.6. Degas the mobile phase solution per the Degassing a Solution by Helium Sparge SOP QCB 6.

SOP: Monoclonal Antibody Aggregate Testing by HPLC Analysis

- 9.1.6.1. Transfer approximately 10ml of mobile phase solution into a labeled 125ml laboratory bottle. This will be used for rinsing the sample syringe.
- 9.1.6.2. Label an empty 500ml laboratory bottle as mobile phase solution waste and place waste line into it, cover with Parafilm.
- 9.2. A) System in short-term storage: Power up the HPLC system and turn on the UV-Vis detector, equilibrate with mobile phase solution at a flow rate of 0.25mL/min for 30 minutes.
- B) System in long-term storage: Power up the HPLC system and turn on the UV-Vis detector, flush column with 5 column volumes of degassed HPLC-grade water at a flow rate of 0.25mL/min for 60 minutes, then 10 column volumes mobile phase solution at a flow rate of 0.25mL/min for 120 minutes.
- 9.2.1. Power up the HPLC system components and start the PeakSimple data collection software [Refer to SOP: Buck Scientific BLC-20P HPLC Operation, document QCB 7, revision 0]
 - 9.2.1.1. Switch the system to mobile phase solution.
 - 9.2.1.1.1. Verify that the pump is off. The Run LED should be off
 - 9.2.1.1.2. Place the intake line into the mobile phase solution bottle and cover with Parafilm
 - 9.2.1.1.3. Verify that the frit is submerged in the solution.
 - 9.2.1.1.4. Place the outlet line into the mobile phase waste bottle.
 - 9.2.1.1.5. Place the sample overflow line into a small waste beaker
 - 9.2.1.2. Purge the intake line and prime the pump
 - 9.2.1.2.1. Attach an empty 5ml Luer-Lok syringe to the purge valve
 - 9.2.1.2.2. Open the prime/purge valve by turning it two full turns counter-clockwise.
 - 9.2.1.2.3. Watching the intake line for bubbles, slowly draw the syringe plunger until it is fully drawn. Mobile phase solution and bubbles should fill the syringe.
 - 9.2.1.2.4. Close the prime /purge valve by rotating it clockwise until it stops.
 - 9.2.1.2.5. Remove the syringe from the purge valve and expel the contents into the waste bottle.
 - 9.2.1.2.6. Repeat attaching the syringe to the purge valve, drawing bubbles and solution into the syringe, and expelling into the waste bottle until free of bubbles (generally 10-15 ml of mobile phase are needed).
 - 9.2.1.3. Start the pump and gradually increase the flow rate to 0.25ml/min over 5min.
 - 9.2.1.3.1. Set the initial flow rate to 0.1 ml/min:
 - 9.2.1.3.1.1. Press the MODE button on the front panel repeatedly until the Flow LED turns on. The current flow rate (in ml/min) appears on the digital display.
 - 9.2.1.3.1.2. Press the Flow up arrow button to increase the flow rate setting and press the down arrow button to decrease the flow rate setting.
 - 9.2.1.3.1.3. Repeat pressing the Flow arrow buttons until 0.10 is displayed.
 - 9.2.1.3.1.4. Start the pump by pressing the RUN/STOP button. The LED should turn on.
 - 9.2.1.3.2. Monitor the pressure reading and mobile phase level.

SOP: Monoclonal Antibody Aggregate Testing by HPLC Analysis

- 9.2.1.3.2.1. Display the pressure reading by pressing the MODE button repeatedly until the Pressure LED turns on. The current pressure (in psi) appears on the digital display.
- 9.2.1.3.2.2. Verify that the waste is dripping into the waste bottle.
- 9.2.1.3.2.3. If the pressure exceeds 2500 psi or the mobile phase runs low stop the pump immediately by pressing the RUN/STOP button.
- 9.2.1.3.2.4. Gradually increase the flow rate to 0.25 ml/min over 5 minutes.
 - 9.2.1.3.2.4.1. Increase the flow rate in 0.1 ml/min increments using the Flow up arrow button.
 - 9.2.1.3.2.4.2. Monitor the pressure readings until a flow rate of 0.25ml/min is achieved and the pressure reading is stable.
- 9.2.2. Ensure the UV-Vis detector has been running for at least 15 minutes before proceeding. Set the UV-Vis detector wavelength to 220 nm and autozero the detector.
 - 9.2.2.1. Set the UV-Vis detector wavelength by pressing the λ up and down buttons until 220nm is displayed.
 - 9.2.2.2. Press the Autozero button in the front panel.
- 9.3. While system is equilibrating, reconstitute AdvanceBio SEC 300Å protein standards [Concentration=3.8mg/ml].
 - 9.3.1. Reconstitute lyophilized mixture vial contains 3.8mg total protein.
 - 9.3.2. Add 1,000µL of freshly prepared mobile phase solution (150mM Sodium Phosphate, pH 7.0).
 - 9.3.3. Invert the vial several times gently (do not vortex).
 - 9.3.4. Place in a sonicating water bath. Pulse for several minutes in 30s intervals with 15s breaks to fully reconstitute the sample; avoid elevating temperature.
 - 9.3.5. Manufacture recommendations are to prepare aliquots of this standard stock solution and store at 2-8°C for up to 1 year. However, this may result in degradation of the 1 KD protein standard. This can be avoided by storing single-use aliquots at -20°C.
- 9.4. Prepare a 0.152mg/ml working stock of AdvanceBio SEC 300Å protein standards
 - 9.4.1. To produce protein standards at [0.152mg/ml], place 40µL of reconstituted AdvanceBio SEC 300Å protein standards [Concentration=3.8mg/ml] into labeled 1.5ml Eppendorf tube.
 - 9.4.2. Add 960µL of freshly prepared mobile phase solution, 150mM Sodium Phosphate, pH 7.0.
 - 9.4.3. Invert the vial several times gently (do not vortex).
 - 9.4.4. Gently pipette up and down several times to mix.
 - 9.4.5. Transfer with pipette and filter with 0.22µm syringe filter into a sterile 1.5ml Eppendorf tube
 - 9.4.6. Label as 'S' for AdvanceBio SEC 300Å protein standards
- 9.5. Prepare monoclonal antibody (mAb) sample for HPLC analysis.

**Note: Post protein A chromatography mAb sample contains 0.083M Sodium Citrate pH3 and 0.167M Tris pH 9.*

 - 9.5.1. The mAb is diluted in freshly prepared mobile phase solution (150mM Sodium Phosphate, pH 7.0) to a final concentration between 0.024 - 0.096mg/ml.

SOP: Monoclonal Antibody Aggregate Testing by HPLC Analysis

- 9.5.2. For a sample with 1.2mg/ml, place 40 μ L of post protein A chromatography mAb drug substance into labeled 1.5ml Eppendorf tube.
- 9.5.3. Add 960 μ L of freshly prepared mobile phase solvent containing 150mM Sodium Phosphate, pH 7.0.
- 9.5.4. Invert the vial several times gently (do not vortex).
- 9.5.5. Gently pipette up and down several times to mix.
- 9.5.6. Transfer with pipette and filter with 0.22 μ m syringe filter into a sterile 1.5ml Eppendorf tube
- 9.5.7. Label as 'M' for mAb sample
- 9.6. Prepare monoclonal antibody (mAb) buffer [1,000 μ l 0.1M Sodium Citrate, pH 3 + 200 μ l 1M Tris pH 9] for HPLC analysis.
 - 9.6.1. Dilute buffer that post protein A chromatography mAb is suspended in using the same dilution as used in step 9.5.
 - 9.6.2. Invert the vial several times gently (do not vortex).
 - 9.6.3. Gently pipette up and down several times to mix.
 - 9.6.4. Transfer with pipette and filter with 0.22 μ m syringe filter into a sterile 1.5ml Eppendorf tube.
 - 9.6.5. Label as 'B' for buffer.
- 9.7. The UV-Vis detector needs to warm up for 60 minutes prior to collecting data, monitor the UV-Vis signal for stability. For each sample (S, M, B) run an assay for 10 minutes at 0.25ml/min per the HPLC Operation SOP. See 10.1-10.3 for example chromatograms of S, M & B.
 - 9.7.1. Use PeakSimple to start a new 10 minute run.
 - 9.7.2. Autozero the UV-Vis detector.
 - 9.7.3. Setup autosampler to record data for 10 minutes.
 - 9.7.3.1. In PeakSimple software select EDIT – Channels.
 - 9.7.3.2. Under Channel 1, select Details.
 - 9.7.3.3. Change default display limits to 75mV MAX, -10mV MIN.
 - 9.7.3.4. Change end time to 10 mins.
 - 9.7.3.5. Leave other settings as default and click OK.
 - 9.7.3.6. In PeakSimple software select EDIT – Overall
 - 9.7.3.7. Change default display period Start: 1 min., End: 10 min.
 - 9.7.3.8. Leave other settings as default and click OK.
 - 9.7.4. Load and inject sample.
 - 9.7.4.1. Rinse syringe 3x with fresh mobile phase solution.
 - 9.7.4.2. Fill Hamilton syringe with 100 μ l of sample.
 - 9.7.4.3. Ensure the sample is free of air bubbles
 - 9.7.4.4. Insert the syringe into sample injection port.
 - 9.7.4.5. Inject sample into HPLC machine, ensuring air bubbles do not enter machine
 - 9.7.4.6. Twist sample port injection port switch from LOAD position to INJECT position
 - 9.7.4.7. Wait 10 seconds
 - 9.7.4.8. Twist sample port back to LOAD position.
 - 9.7.4.9. Remove syringe and empty contents into waste beaker.

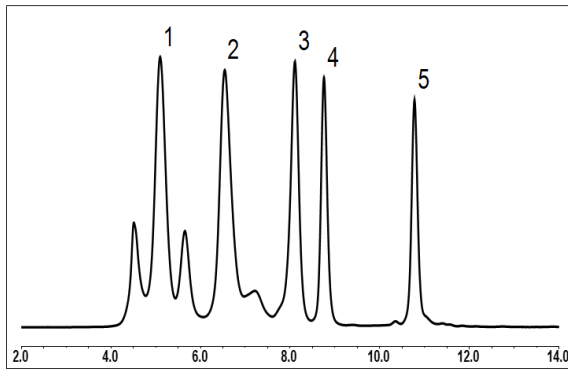
SOP: Monoclonal Antibody Aggregate Testing by HPLC Analysis

- 9.7.4.10. Rinse syringe 3x with fresh mobile phase solution.
- 9.7.4.11. To run additional samples, repeat steps 9.7.4.2 through 9.7.4.10.
- 9.7.4.12. After the last sample has run, rinse syringe 3x with MilliQ water and 3x with 20% ethanol.
- 9.7.5. Note the time at the center of the sample peak on the chromatograph.
 - * The AdvanceBio SEC 300Å protein standards will contain 5 distinct peaks
- 9.7.6. Save the data to a separate chromatogram file.
- 9.7.7. View the results [VIEW – Results.] and copy the data to a separate sheet in an Excel workbook.
- 9.7.8. Save chromatogram file with new name, and print chromatogram.
- 9.7.9. Retention time and area associated with each peak will print with the chromatogram.
- 9.8. Prepare HPLC system for short-term (1 week or less) or long-term (longer than 1 week) storage.
 - 9.8.1. Short-term storage (1 week or less): Wash the system with mobile phase solution for 30 minutes at a flow rate of 0.25ml/min.
 - 9.8.2. Long-term storage (longer than 1 week):
 - 9.8.2.1. Flush the column with a minimum of 10 column volumes with 0.2µm filtered and degassed MilliQ water to remove buffer salts. Flush the injection port with filtered and degassed MilliQ water.
 - 9.8.2.2. Flush the column with a minimum of 10 column volumes with 0.2µm filtered and degassed 20% Ethanol. Flush the injection port with filtered and degassed 20% Ethanol.
- 9.9. Graph the calibration curve using excel:
 - 9.9.1.1. Add new sheet to Excel workbook with 2 columns. Label the left column “Retention Time (min)” and the right column “Protein Size (kDa)”
 - 9.9.1.2. Fill in the Protein Size column with the values 670, 150, 45, 17, 1.
 - 9.9.1.3. Fill in the Retention Time column with the retention time of each peak corresponding to the AdvanceBio SEC 300Å protein standards.
 - 9.9.1.4. Highlight the data table and create a scatter chart.
 - 9.9.1.4.1. Insert Tab > Scatter Chart.
 - 9.9.1.5. Reformat the y-axis (Protein Size) to the log scale.
 - 9.9.1.5.1. Right click on y-axis > Format Axis. Axis Options Tab > Check Logarithmic scale [Base 10]
 - 9.9.1.6. Insert a Trendline.
 - 9.9.1.6.1. Click on chart > + sign in upper right > Trendline ► More Options...> Trendline Options Tab > Select ‘Exponential’, Select ‘Display Equation on Chart’, Select ‘Display R-squared value on chart’
- 9.9.2. Estimate size of mAb drug product by inserting retention time into equation of line derived from AdvanceBio SEC 300Å protein standards
 - 9.9.2.1. Substitute ‘x’ in equation for retention time of mAb drug product peak.
 - 9.9.2.2. Solve for ‘y’, protein size in kDa.

SOP: Monoclonal Antibody Aggregate Testing by HPLC Analysis

10. Attachments:

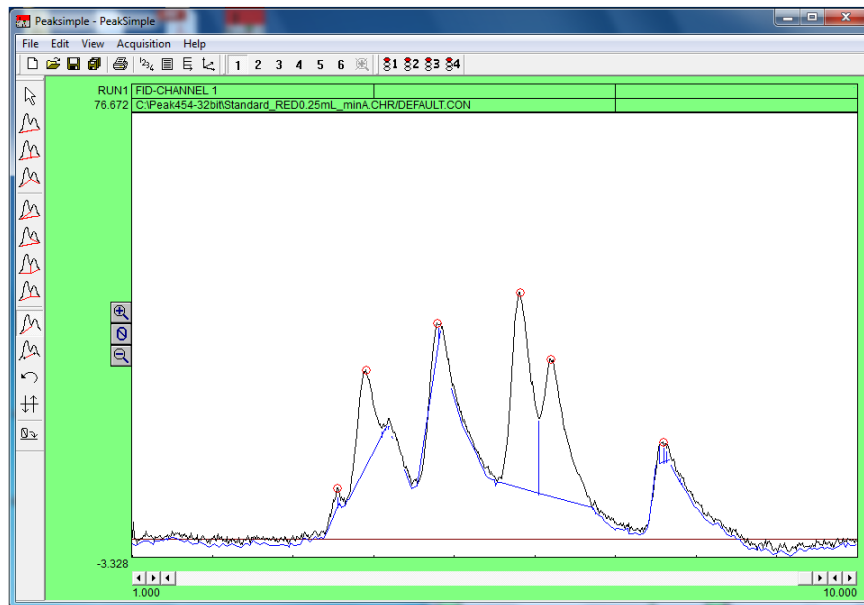
- 10.1. Protein standard 5190-9417 separated on an Agilent AdvanceBio SEC 300Å Column, 4.6 x 300 mm (PL1580-5301).



Peak #	Analyte	MW (daltons)
1	Thyroglobulin (bovine)	670,000
2	γ-globulin (bovine)	150,000
3	Ovalbumin (chicken)	45,000
4	Myoglobin (equine heart)	17,000
5	Angiotensin II (human)	1,000

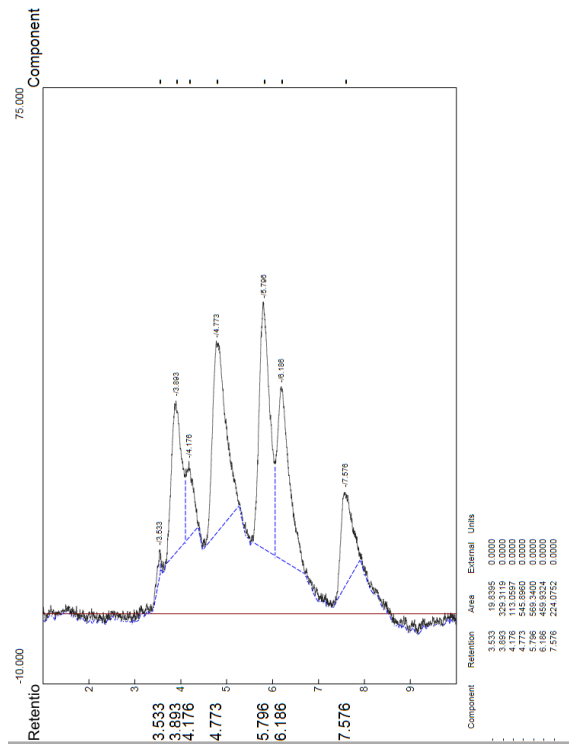
*Retention times will vary with different HPLC conditions, column and instrument.

- 10.2. Chromatogram of AdvanceBio SEC 300Å protein standards run on AdvanceBIO 300Å-4.6mm x 150mm HPLC column (Product # PL1580-3301) at a rate of 0.25ml/min. x-axis: Retention time; y-axis: absorbance at 220nm as viewed in Peaksimple software.



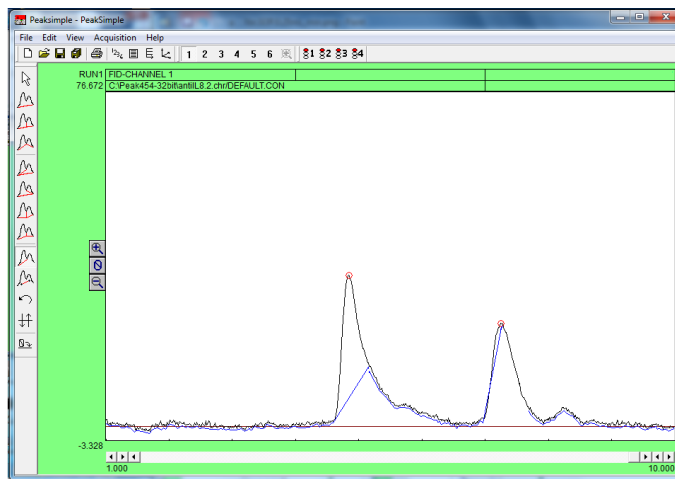
SOP: Monoclonal Antibody Aggregate Testing by HPLC Analysis

10.3. Chromatogram of AdvanceBio SEC 300Å protein standards run on AdvanceBIO 300Å-4.6mm x 150mm HPLC column (Product # PL1580-3301) at a rate of 0.25ml/min. x-axis: Retention time; y-axis: absorbance at 220nm as viewed on a Peaksimple print-out.

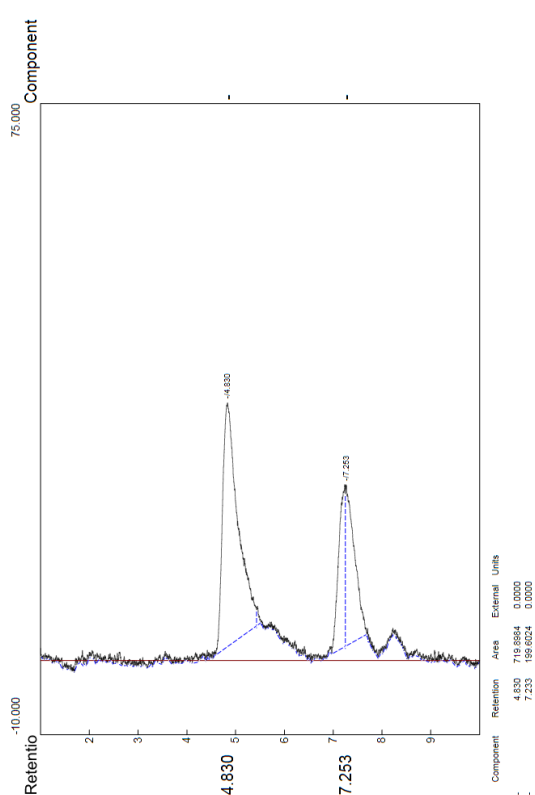


10.4. Chromatogram of anti-IL-8 mAb drug product run on AdvanceBIO 300Å-4.6mm x 150mm HPLC column (Product # PL1580-3301) at a rate of 0.25ml/min. x-axis: Retention time; y-axis: absorbance at 220nm as viewed in Peaksimple software.

SOP: Monoclonal Antibody Aggregate Testing by HPLC Analysis

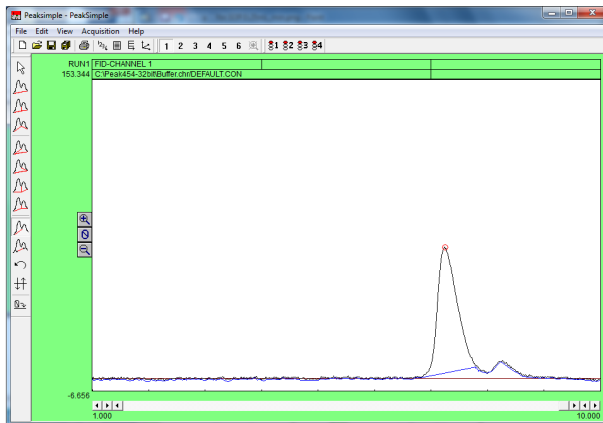


- 10.5. Chromatogram of anti-IL-8 mAb drug product run on AdvanceBIO 300Å- 4.6mm x 150mm HPLC column (Product # PL1580-3301) at a rate of 0.25ml/min
x-axis: Retention time; y-axis: absorbance at 220nm as viewed on a PeakSimple print-out.

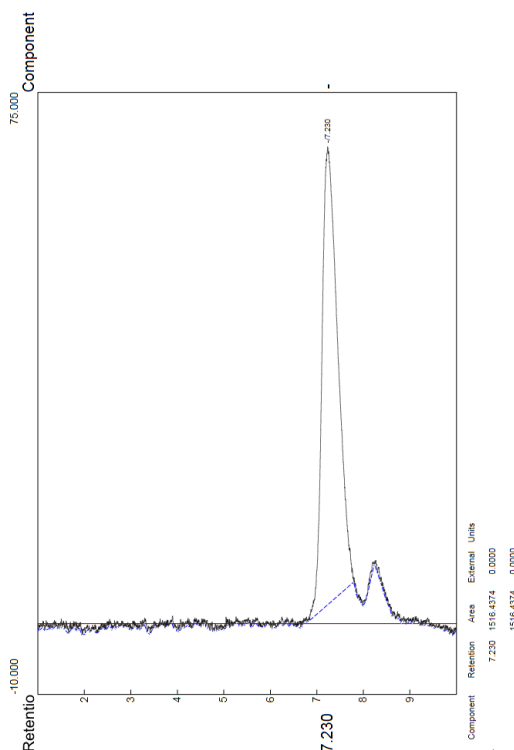


- 10.6. Chromatogram of mAb buffer run on AdvanceBIO 300Å- 4.6mm x 150mm HPLC column (Product # PL1580-3301) at a rate of 0.25ml/min. x-axis: Retention time; y-axis: absorbance at 220nm as viewed in PeakSimple software.

SOP: Monoclonal Antibody Aggregate Testing by HPLC Analysis

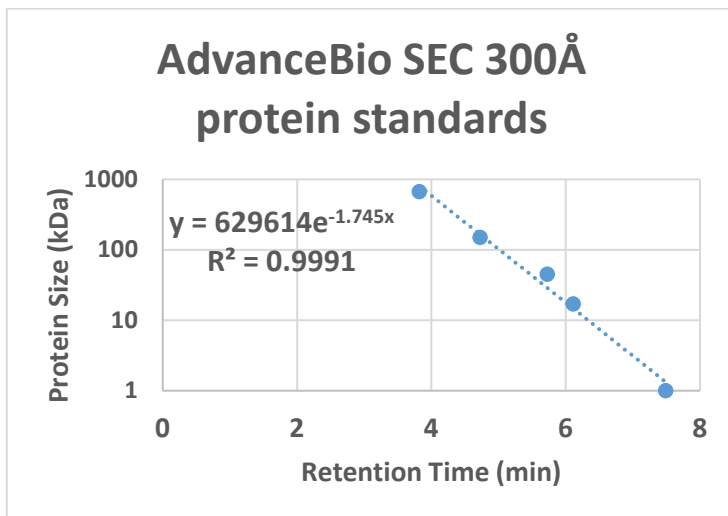


10.7. Chromatogram of mAb buffer run on AdvanceBIO 300Å- 4.6mm x 150mm HPLC column (Product # PL1580-3301) at a rate of 0.25ml/min. x-axis: Retention time; y-axis: absorbance at 220nm as viewed in PeakSimple software.



10.8. Standard curve of AdvanceBio SEC 300Å protein standards (as presented above in 10.2 & 10.3)

SOP: Monoclonal Antibody Aggregate Testing by HPLC Analysis



10.9. Example of equation typed into Excel to solve for the size of a mAb that exhibited a retention time of 4.79 seconds using the equation of the exponential line shown in 10.8.

$=629614*(EXP(-1.745*4.79)) =147.571 \text{ KiloDaltons}$

From equation of line Retention time of mAb

11. History:

Name	Date	Amendment
Dr. Matt Marshall	04APR2019	Initial release
Robin Zuck	14JUN2021	Column storage conditions changed